

Project: IEEE P802.15 Working Group for Wireless Personal Area Networks (WPANs)

Submission Title: [IG DEP Requirement for Wireless Medical BAN to Apply for ECoG-based Brain-Machine Interface]

Date Submitted: [15 July 2019]

Source: [Takafumi Suzuki¹, Masayuki Hirata²] [1; Center for Information and Neural Networks(CiNet), National Institute of Information and Communication Technology(NICT), 2; Dept. of Neurological Diagnosis and Restrtaion, Graduate School of Medicine, University of Osaka]

Address [1; 1-4 Yamadaoka, Suita, Osaka, 565-0871

2; 2-2 Yamadaoka, Suita, Osaka, 565-0871]

Voice:[1; +81-80-9098-3264, 2:+81-6-6210-8429], FAX: [+81-6-6210-8430],

Email:[1: t.suzuki@nict.go.jp, 2:mhirata@ndr.med.osaka-u.ac.jp]

Re: []

Abstract: [A important use case of dependable body area network(WBAN) for implanted devices is introduced to perform reliable and massive data for ECoG-based Brain machine interface to require amendment for IEEE802.15.6 wireless medical body area network.]

Purpose: [information]

Notice: This document has been prepared to assist the IEEE P802.15. It is offered as a basis for discussion and is not binding on the contributing individual(s) or organization(s). The material in this document is subject to change in form and content after further study. The contributor(s) reserve(s) the right to add, amend or withdraw material contained herein.

Release: The contributor acknowledges and accepts that this contribution becomes the property of IEEE and may be made publicly available by P802.15.

Requirement for Wireless Medical BAN to Apply for ECoG-based Brain-Machine Interface

Takafumi Suzuki

**Bain Networks and Communication Laboratory
Center for Information and Neural Networks, NICT**

Masayuki Hirata

MD, PhD & Meng, Professor

**Department of Neurological Diagnosis and Restoration,
Osaka University Graduate School of Medicine**

Outline

ECoG-BMI system

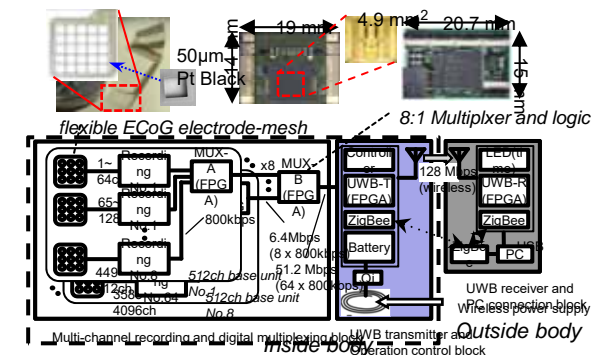
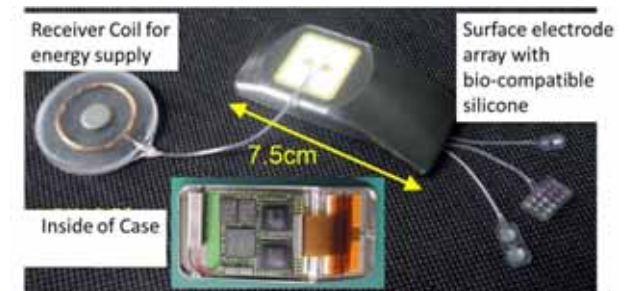
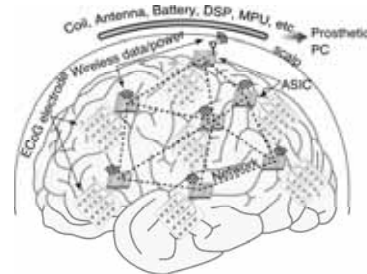
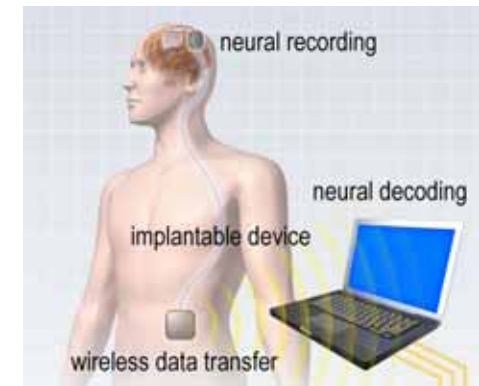
1st Generation **128ch system**: Clinical ECoG-BMI system
 → Clinical test in 2020

2nd Generation **4096ch system**
 → Next generation system

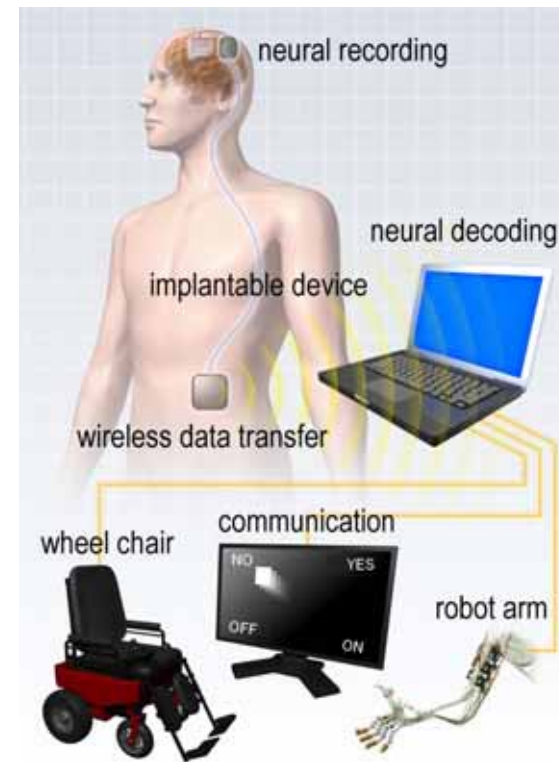
- Flexible electrode technology
- UWB wireless technology

BMI (system evaluation)

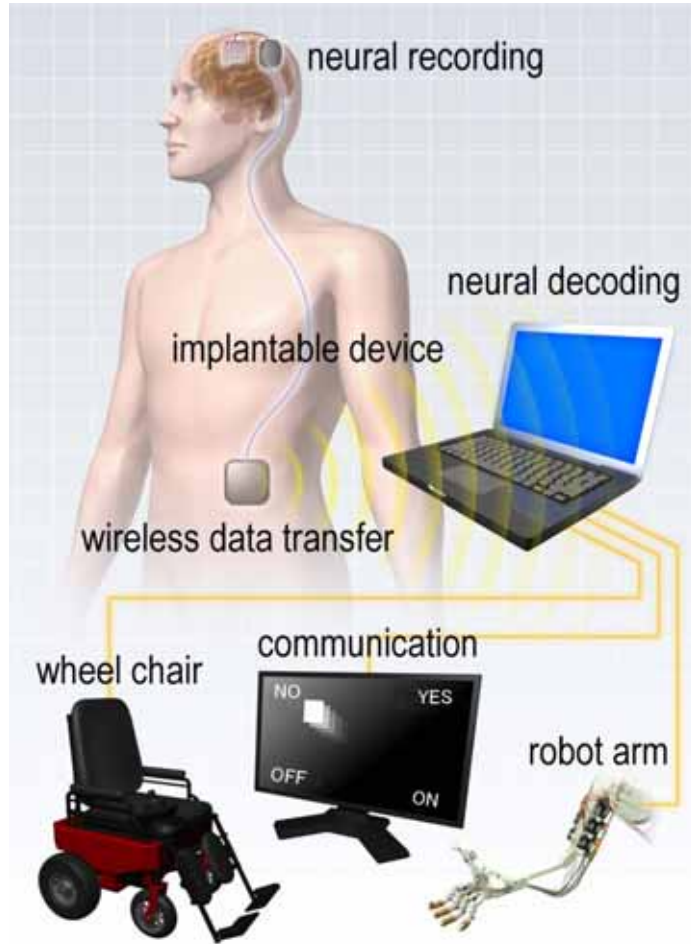
- Real-time decoding
- Robotic arm control and cortical adaptation



1st Generation (128ch ECoG-BMI system)

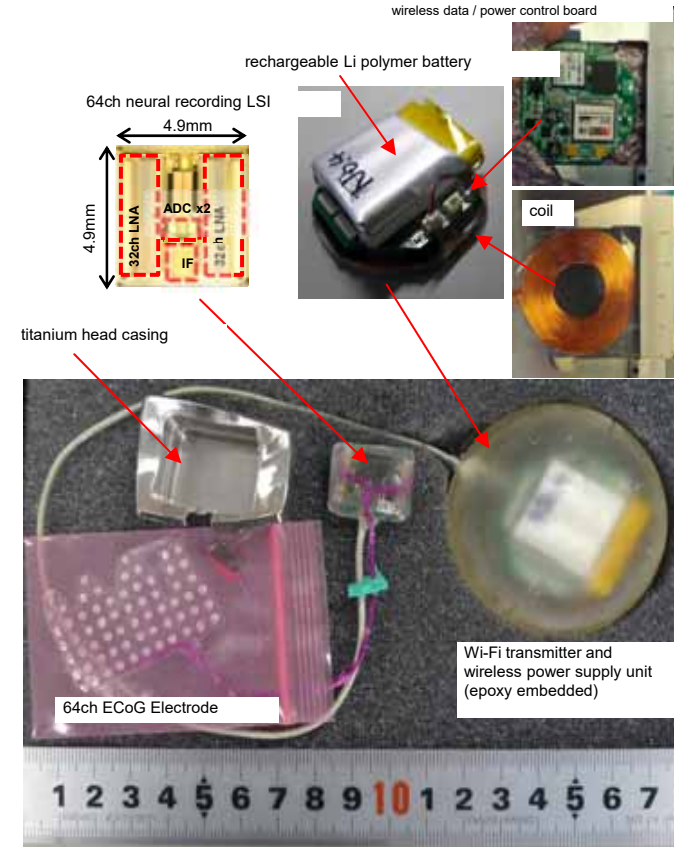


A fully implantable wireless BMI system



Pre-clinical test in 2017

Clinical test in 2018



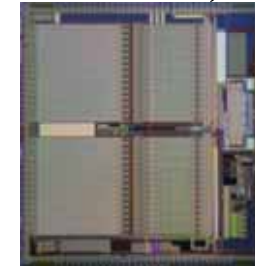
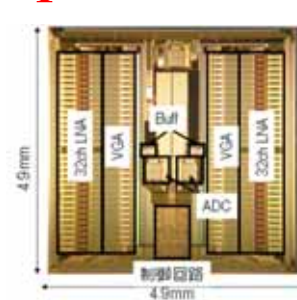
Prototype 64/128ch system
six months in a monkey (2013)

1st Generation 128ch system (Improvement for clinical use)

Abdomen unit

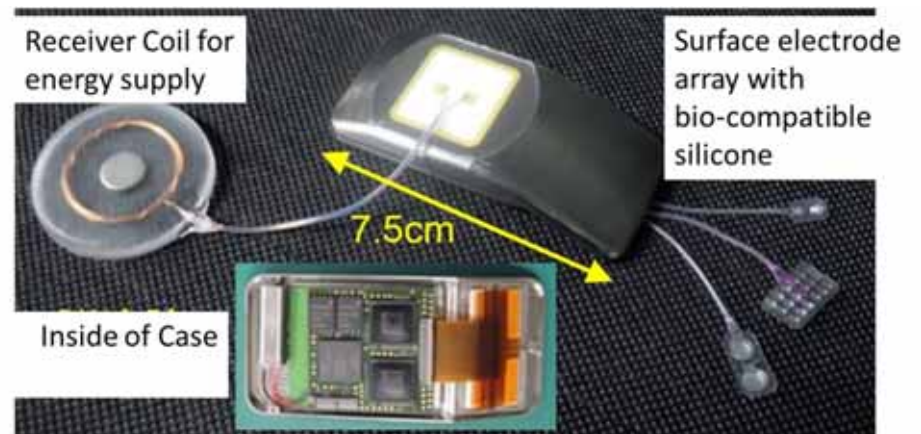
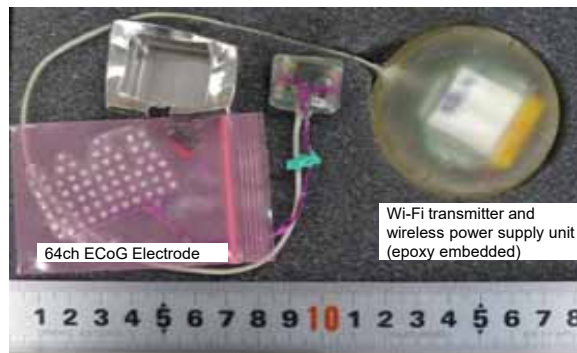
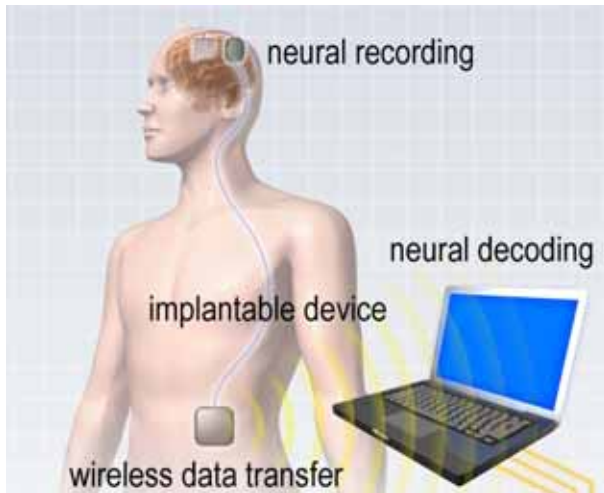
→ Integrated into head unit

Smaller system can decrease various risks.



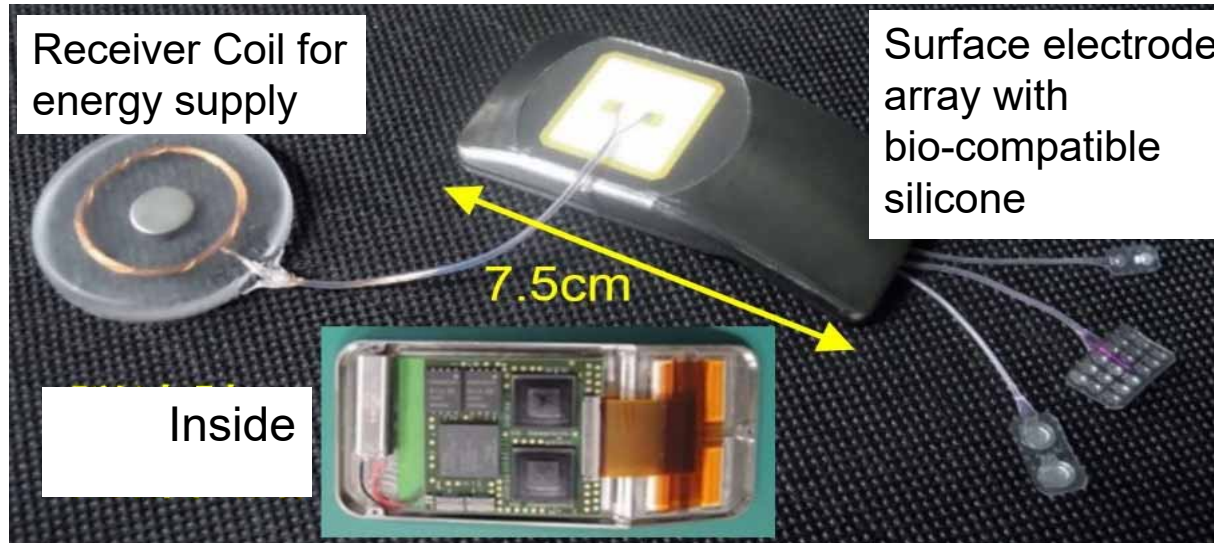
TSMC CMOS
0.25μm
(7.1mm × 7.3mm)

- LSI improvement
→ Lower noise, safety, etc.



Current version:
Casing, non-touch energy supply

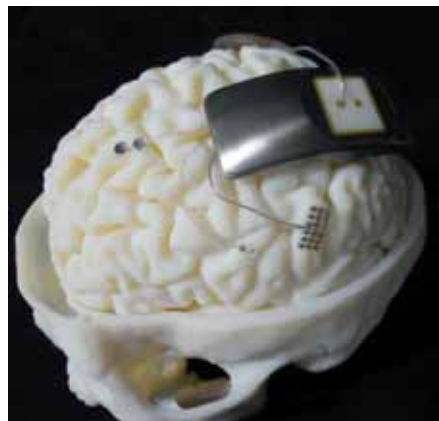
1st Generation 128ch system (Improvement for clinical use)



TSMC CMOS 0.25 μ m
(7.1mm \times 7.3mm)
-32ch x 4chips
-Noise (input) 3 μ Vpp
-Capable of High- γ
band recording

Wireless transmitter (2.4 GHz ISM Band) ~
1.9Mbps

- GLP test (bio-compatibility)
- Implant test (animal)



2nd Generation (4096ch ECoG-BMI system)

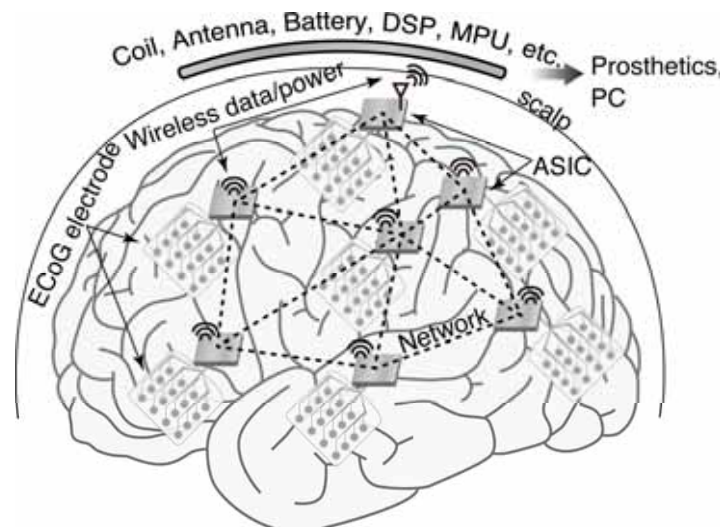
Next generation multi-channel BMI system more than 4,000 channels

For more accurate estimation of movement intentions

- a large number of recording channels
- recording at several regions simultaneously

Our target

implantable, distributed, and wireless



Issue of multi-channel system: volume of data
ex. ECoG, 1kS/s, 12bit-ADC
~1Mbps@100ch, ~100Mbps@10,000ch

Improvement for next generation (128ch-> 4096ch)

Issues to be solved

(1): High density electrode array

Silicone + Pt array

→ **Parylene-C + Pt (or Au)**

(2): LSI (amplifier + ADC)

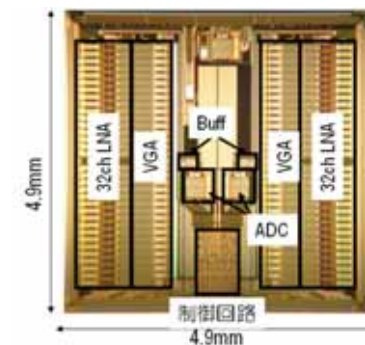
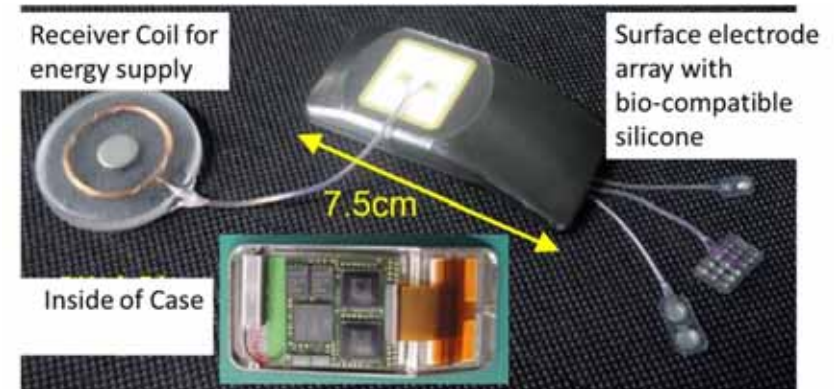
32ch x 4 chips

→ 64ch x **64chips**

(3): Wireless transmitting

ISM (1.9Mbps)

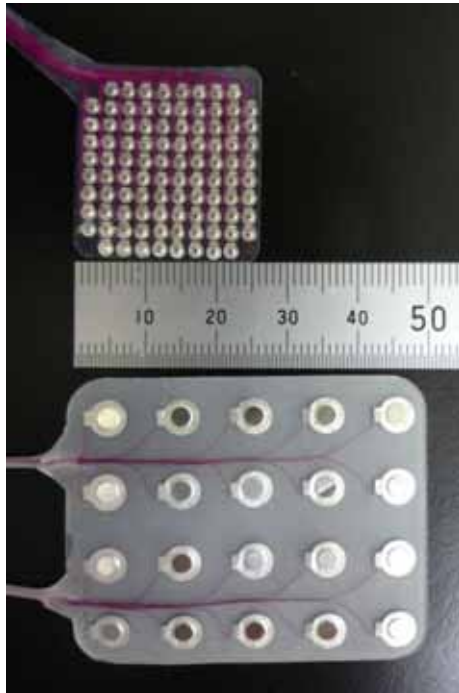
→ **UWB(128Mbps)**



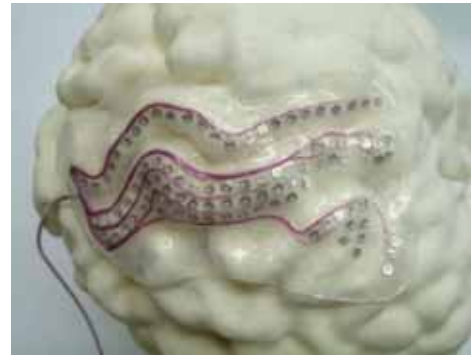
2nd Generation (4096ch ECoG-BMI system)

Flexible electrode technology

Electrode Array (Safety, High density, Stability)



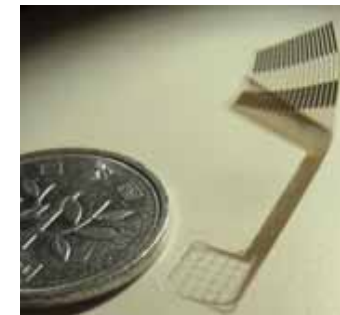
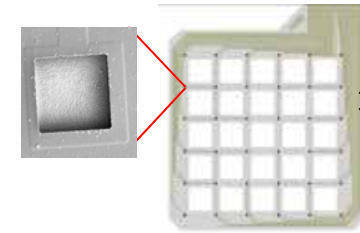
Up: **High Density**
(IED: 2.5mm)
Down: Clinical



3D-shape
Individual MRI Data
1st Generation



3D-double surface
for intra-sulcus



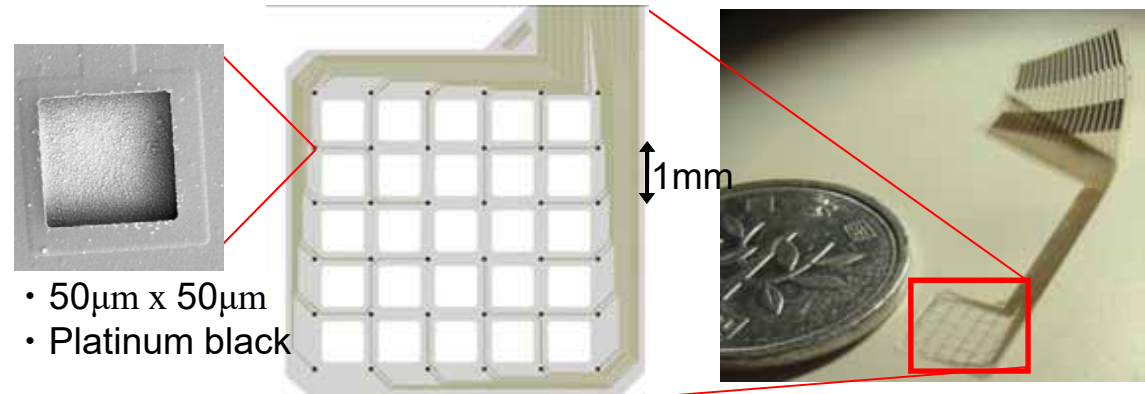
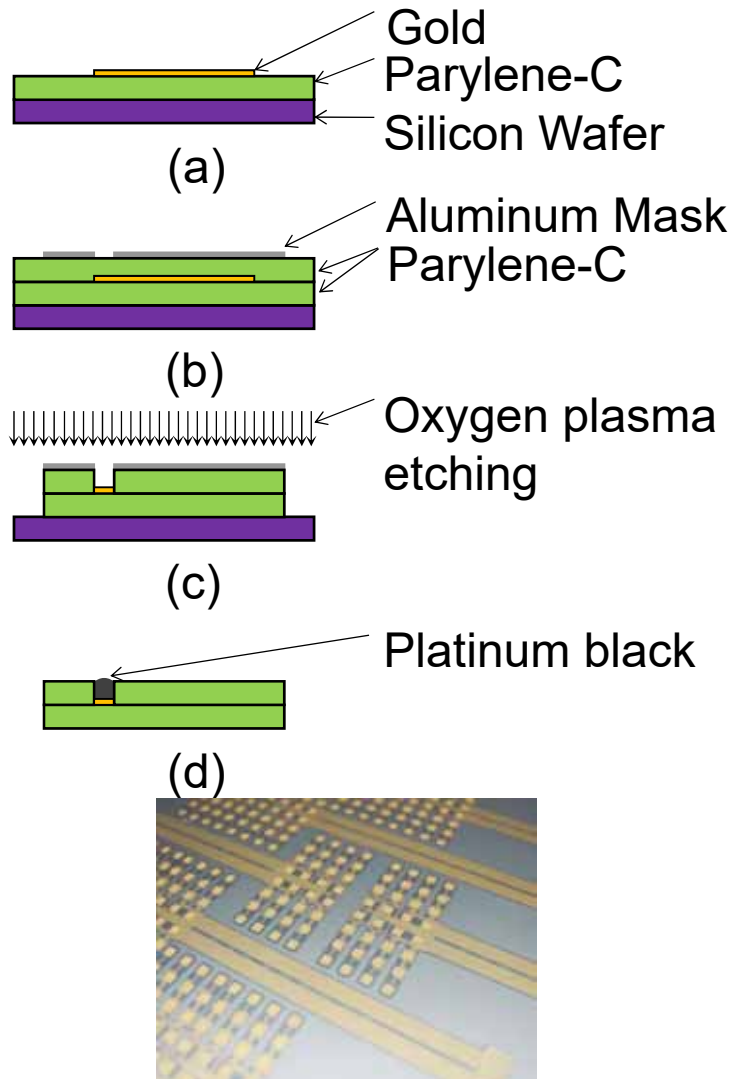
Flexible electrode array

- Parylene-C、 High Density: IED 50μm
- Relationship between intracortical and ECOG signal

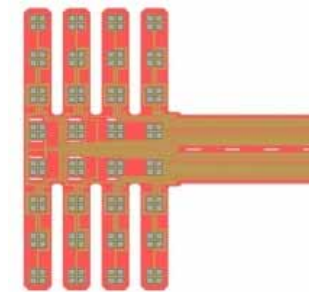
2nd Generation

(Hirata M, IEICE Trans Commun, 2011)

Flexible Electrode array for ECoG



Toda, Neuroimage(2011)

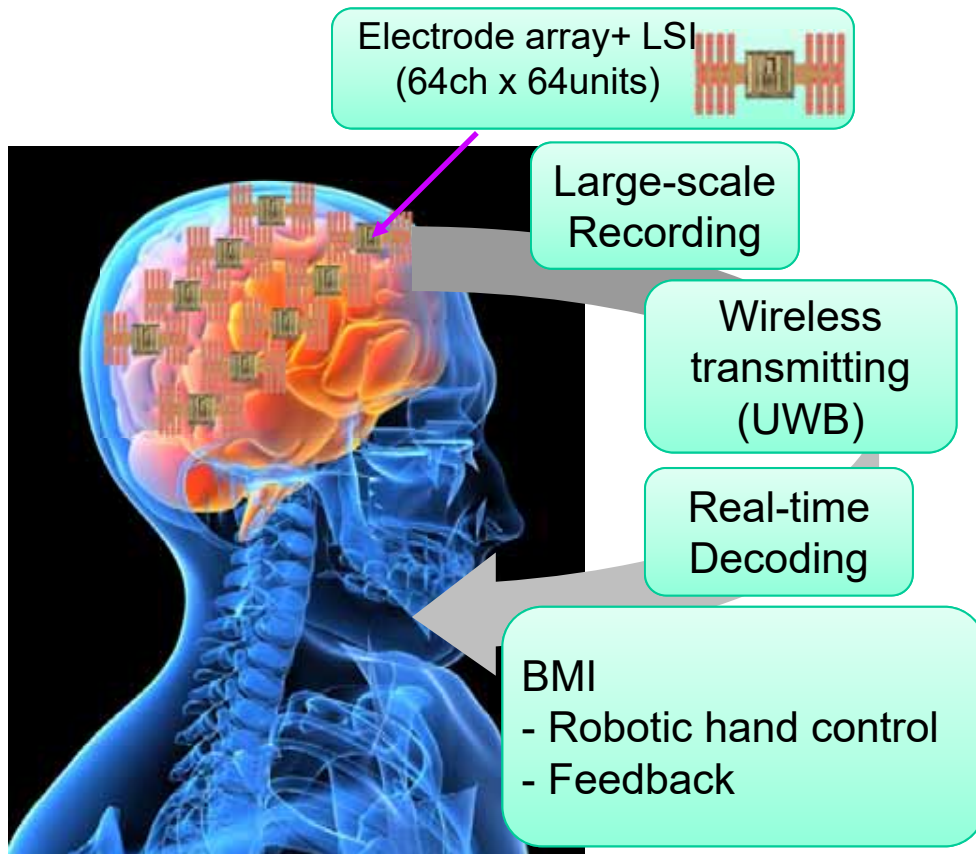


Monkey128ch
- > 2.5 years
- into sulcus
(Hasegawa Lab,
Niigata Univ.)

2nd Generation (4096ch ECoG-BMI system)

Wireless technology
UWB(Ultra-Wide
Band)

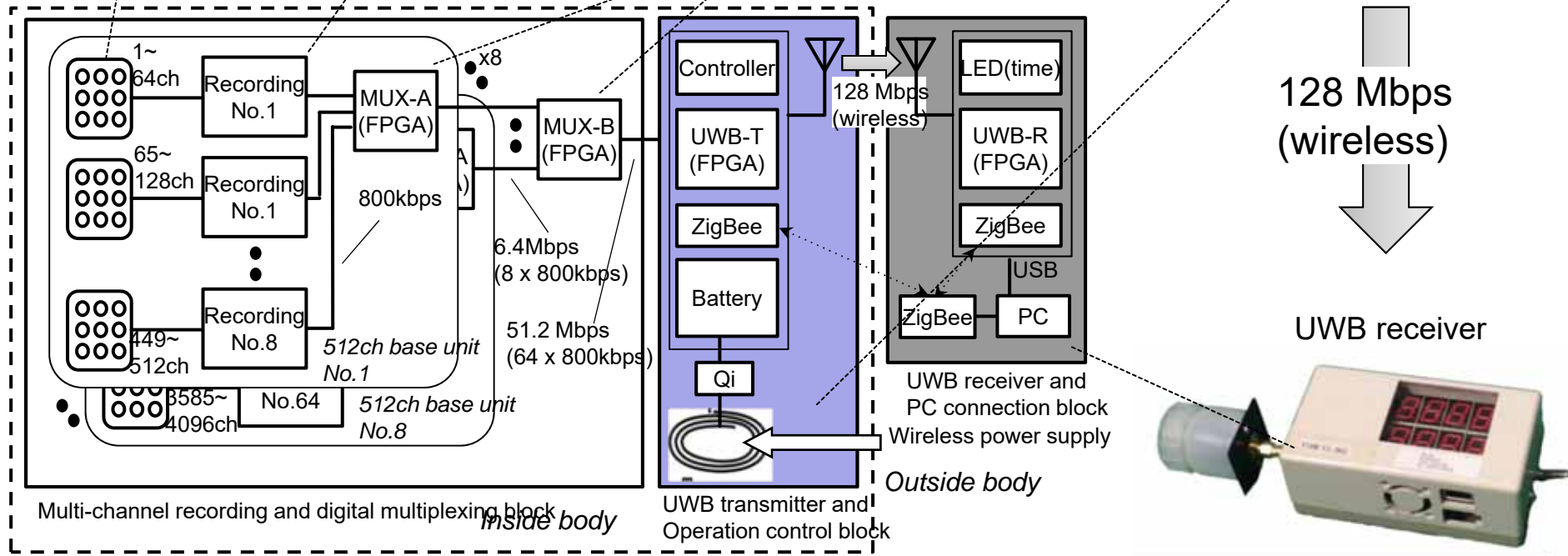
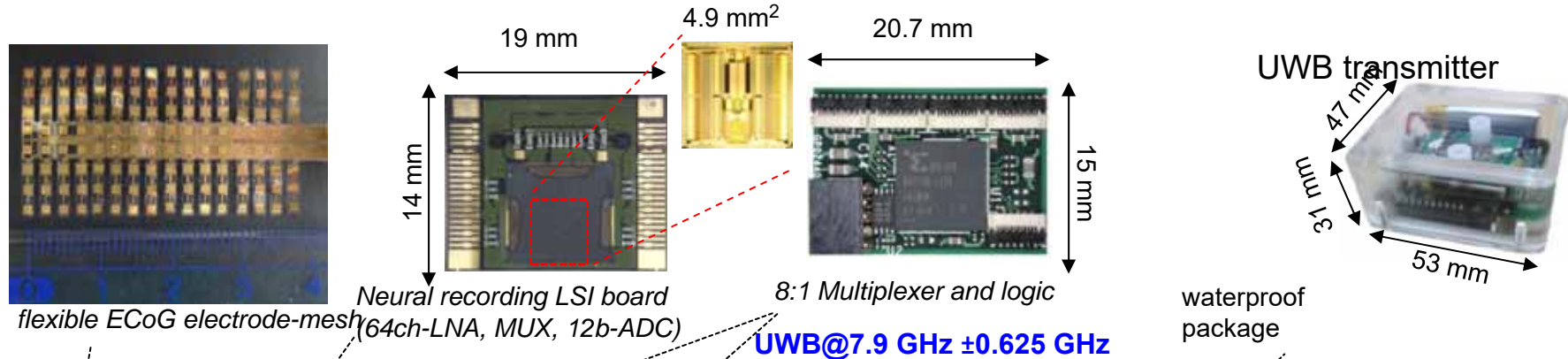
Super multi-channel system using UWB(4096ch ~)



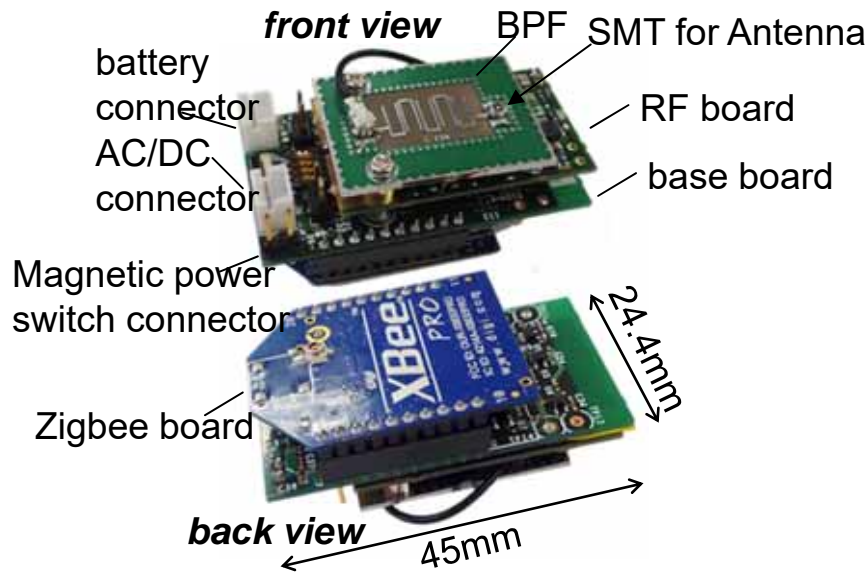
1st Generation (128ch)
-ISM band (2.4GHz) [1.9Mbps]
12bit x 1kHz x 128ch
= 1.5 Mbps

2nd Generation (>4000ch)
12bit x 1kHz x 4096ch
= 49Mbps → **UWB**
(Ultra Wide Band)
+ Distributed system

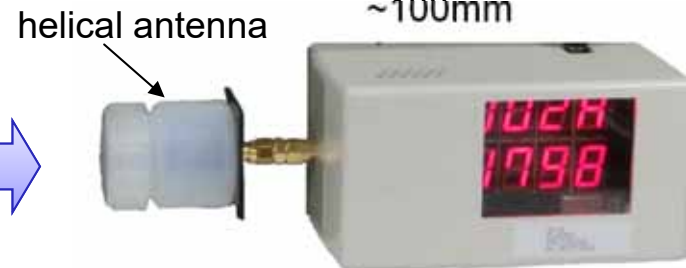
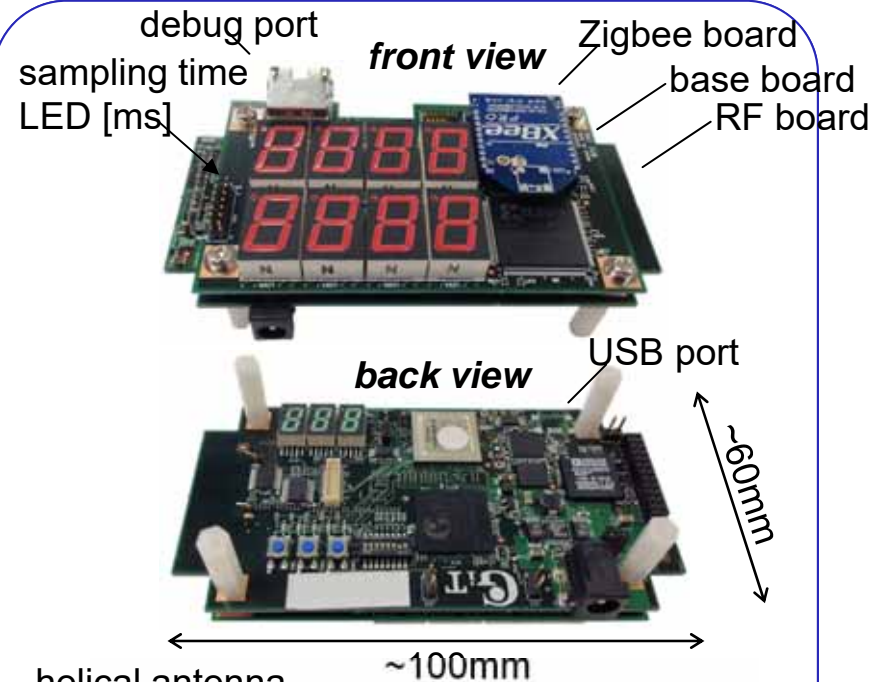
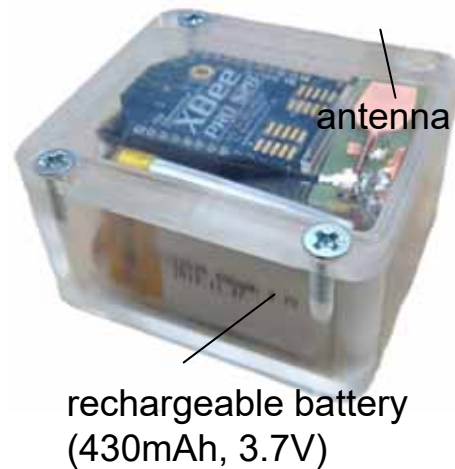
UWB system (4096ch) -Prototype-



UWB transmitter and receiver



Including UWB transmitter, BPF, antenna, Zigbee, Li-ion polymer battery

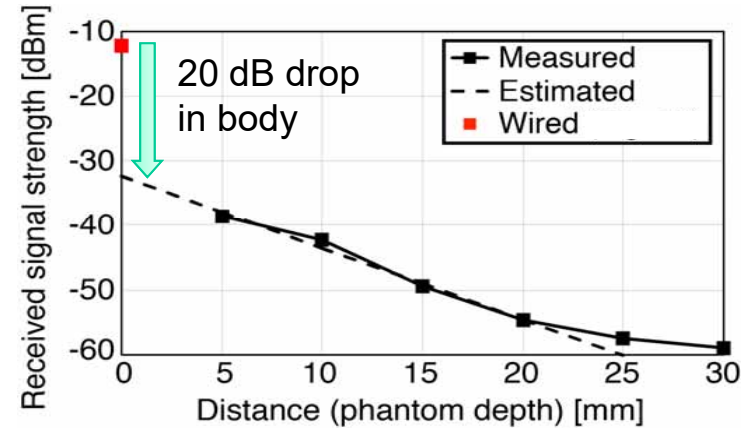
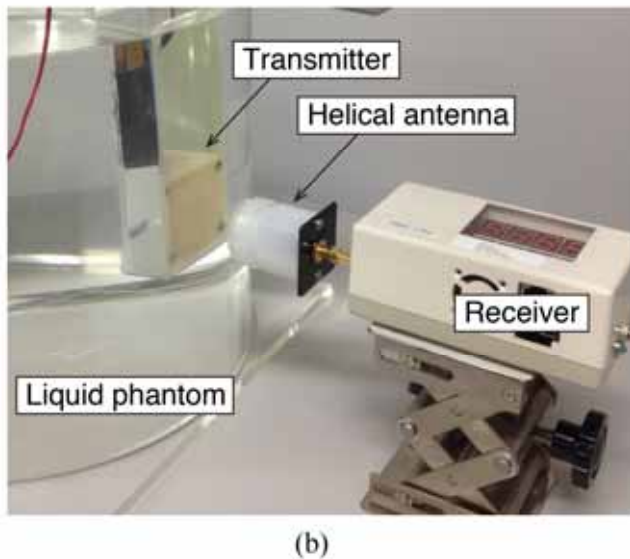
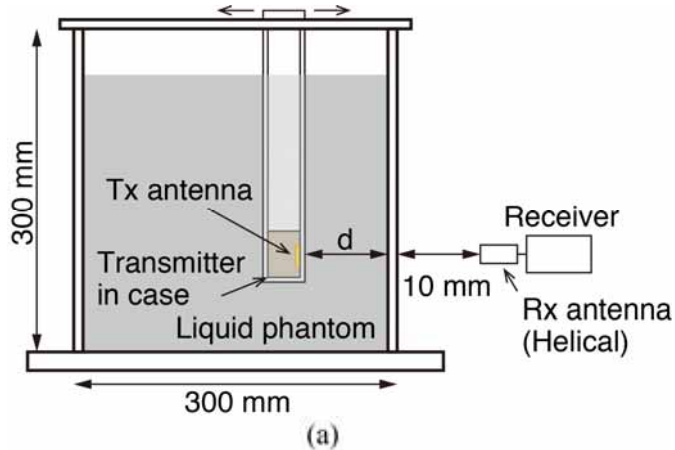


- Including UWB receiver, antenna, Zigbee unit
- Connected to PC by USB2.0
- Real-time Graphical view

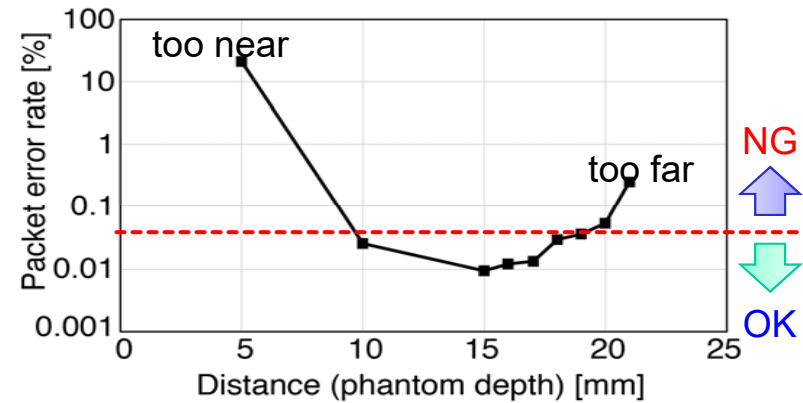
UWB system (Specification)

| | | | |
|----------------------------------------------------------------------------------------------------------|-------------|------|---------------------------|
| Number of channels | 64~4096 | ch | |
| Supply voltage | 3.3 | V | |
| Total power of implant devices | 2.03 | W | @4096ch (version 2014) |
| UWB bandwidth | 7.275~8.525 | GHz | for internationally usage |
| UWB data rate | 128 | Mbps | |
| MUX-A and MUX-B (common hardware) | | | |
| Xilinx Spartan6 XC6SLX16, FPC connector (11pin) | | | |
| UWB transmitter (water proof casing) | | | |
| RF, BPF and ZigBee board | | | |
| LVDS receiver (51.2Mbps), Magnetic Power SW (20mm range) and rechargeable Li polymer battery (400mAh) | | | |
| UWB receiver | | | |
| RF board, base board (Xilinx vertex4, USB2.0) and Zigbee board | | | |
| PC | | | |
| Core i7 3820 Win7 (USB2.0, GUI application) | | | |

Evaluation of UWB in human equivalent liquid phantom



Measured characteristics of received signal strength.



Packet error rate with respect to the phantom depth.

128 Mbps UWB wireless communication is available below 20 mm between inside to outside body.

(a) Diagram and (b) photograph of the measurement setup.

Thank you for your attention