

Project: IEEE P802.15 Working Group for Wireless Personal Area Networks (WPANs)

Submission Title: [Resolutions for the some comments related to MLME-DIMMER primitives]

Date Submitted: [9th July, 2010]

Source: [Il Soon Jang, Sang-Kyu Lim, Dae Ho Kim, You Jin Kim, Tae-Gyu Kang] Company [ETRI]

Address [138 Gajeongno, Yuseong-gu, Daejeon, 305-700]

Voice:[+82-42-860-5424], FAX: [+82-42-860-5218], E-Mail:[isjang@etri.re.kr]

Re: [Response to LB50 comments]

Abstract: [This document describes the resolutions for the some comments related to MLME-DIMMER primitives]

Purpose: [Proposal to resolve some comments related to MLME-DIMMER primitives]

Notice: This document has been prepared to assist the IEEE P802.15. It is offered as a basis for discussion and is not binding on the contributing individual(s) or organization(s). The material in this document is subject to change in form and content after further study. The contributor(s) reserve(s) the right to add, amend or withdraw material contained herein.

Release: The contributor acknowledges and accepts that this contribution becomes the property of IEEE and may be made publicly available by P802.15.

Resolutions for the some comments related to MLME-DIMMER primitives

Il Soon Jang
isjang@etri.re.kr
ETRI

7 CIDs

- There are 7 CIDs associated with MLME-DIMMER primitives
 - 625, 634
 - 632, 631, 626, 627, 632a,

CID 625

CID	Name	Clause	Subclause	Page	Line	Type	Comment	SuggestedRemedy
625	Billy Verso, (affiliation D ecaWave)	7	7.1.16.1.1	129	36	T	MLME-DIMMER.request parameters are just copy of MLME-SET.request, and refers to table 84 of PIB values that contains nothing to do with dimming.	Define parameter(s) to select the required dimming.

- This comment is related to table 65.
- Comment means that the PIBAttribute in table 84(MAC sublayer constants) does not have a dimmer parameter, so suggested remedy is to define parameter to select the required dimming.
- We suggest to change table 84 into table 85(MAC PIB attribute) which has dimmer parameter, *macDim*.
- **Recommendation/Instruction to editor**
 - In our opinion, this comment is correct.
 - We'd like to recommend that we accept this comment in principle.
 - Change the table number 84 to 85.

Table 65—MLME-DIMMER.request parameters

Name	Type	Valid range	Description
PIBAttribute	Enumeration	Table 84	The identifier of the PIB attribute to set.
PIBAttributeValue	Various	Attribute specific	The value of the indicated PIB attribute to set.

CID 634

CID	Name	Clause	Subclause	Page	Line	Type	Comment	SuggestedRemedy
634	David Cypher	7	7.1.16.1.2	130	1	T	request primitives used heading Appropriate usage. Confirm primitives used heading when generated	For consistency change heading to Appropriate usage

- Comment is related to consistency between the title of any other subclauses(7.1.x) and the title of 7.1.16.
- **Recommendation/Instruction to editor**
 - In our opinion, this comment is correct.
 - We'd like to recommend that we accept this comment.

CID 634 (cont.)

7.1.4	Disassociation primitives.....	84
7.1.4.1	MLME-DISASSOCIATE.request.....	84
	7.1.4.1.1 Semantics of the service primitive.....	85
	7.1.4.1.2 Appropriate usage.....	86
	7.1.4.1.3 Effect on receipt.....	86
7.1.4.2	MLME-DISASSOCIATE.indication.....	87
	7.1.4.2.1 Semantics of the service primitive.....	87
	7.1.4.2.2 When generated.....	87
	7.1.4.2.3 Appropriate usage.....	87
7.1.4.3	MLME-DISASSOCIATE.confirm.....	
	7.1.4.3.1 Semantics of the service primitive.....	
	7.1.4.3.2 When generated.....	
	7.1.4.3.3 Appropriate usage.....	
7.1.4.4	Disassociation message sequence charts.....	
7.1.16	Primitives for requesting dimmer settings from the DME.....	
7.1.16.1	MLME-DIMMER.request.....	
	7.1.16.1.1 Semantics of the service primitive.....	
	7.1.16.1.2 When generated.....	
	7.1.16.1.3 Effect on receipt.....	
7.1.16.2	MLME-DIMMER.confirm.....	
	7.1.16.2.1 Semantics of the service primitive.....	130
	7.1.16.2.2 When generated.....	
	7.1.16.2.3 Effect on receipt.....	130

Comments means that the title of dimmer primitive is different to the title of other primitives. Suggested remedy means that change the title for consistency.

CID 632

CID	Name	Clause	Subclause	Page	Line	Type	Comment	SuggestedRemedy
632	R. Roberts	7.1.16	Figure 61	129		T	Figure 61 is wrong	Figure 61 is wrong for the dimmer primitive ... update the figure.

- This comment is related to figure 61.
- Figure 61 shows the message sequence chart for POLL function, not DIMMER function.
- So suggested remedy is to update the figure.
- **Recommendation/Instruction to editor**
 - In our opinion, this comment is correct.
 - We'd like to recommend that we accept this comment.

CID 632 (cont.)

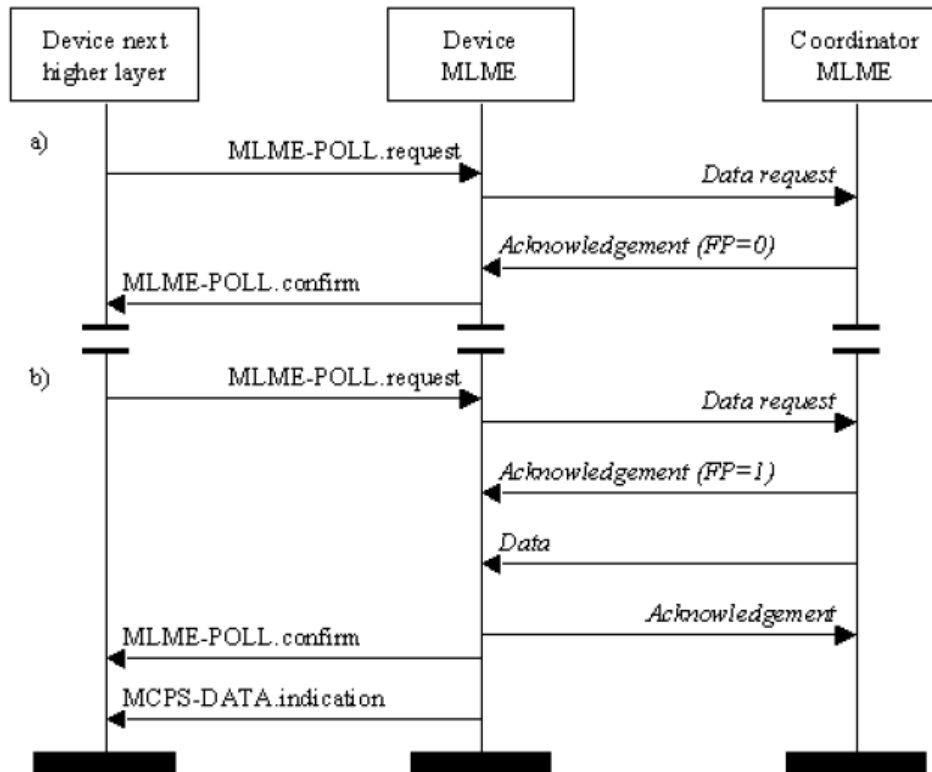


Figure 61—Message sequence chart for performing the dimming function

[Ed. Note: This figure needs to be modified for the DIMMER primitive]

CID 632 (cont.)

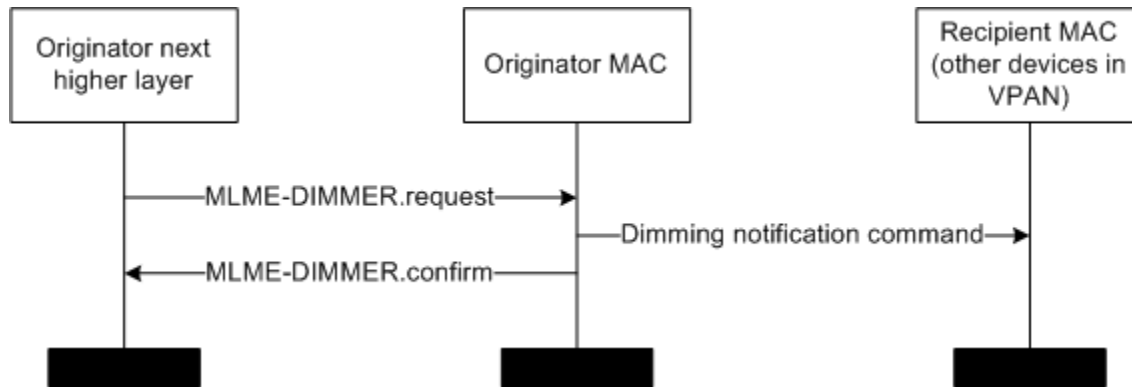


Figure 61. Message sequence chart for performing the dimming function

- We suggest new figure 61 for MLME-DIMMER primitives.
- The MLME-DIMMER.request primitive requests that the MLME perform the dimmer function.
- MAC layer sends a dimming notification command(7.3.10) to MAC of other devices in VPAN.
- MAC layer reports the results of a dimming request.

CID 626

CID	Name	Clause	Subclause	Page	Line	Type	Comment	SuggestedRemedy
626	David Cypher	7	7.1.15.3	129	23	T	Figure 61 shows Message Sequence chart for requesting data from a coordinator, not performing the dimming function	replace "performing the dimming function" with "requesting data from a coordinator"

- This comment is related to figure 61.
- Comment means Figure 61 shows Message Sequence chart for requesting data from a coordinator, not performing the dimming function
- If we change the figure to new one, this comment does not need any more.
- **Recommendation/Instruction to editor**
 - In our opinion, this comment is correct.
 - We'd like to recommend that we accept this comment in principle.
 - However, if we accept CID 632 in previous slide, we do not need these suggested remedy no longer because the figure is modified to perform dimming function.
 - Accept in principle – the implementation of T-CID 632 will result in the modification of the problem; hence, closed

CID 627

CID	Name	Clause	Subclause	Page	Line	Type	Comment	SuggestedRemedy
627	David Cypher	7	7.1.16	129	24	T	The editor's note is wrong and should be need to add a new figure showing dimming function	add new figure for dimming function as soon as some one knows what it does and the text is properly corrected.

- This comment is related to figure 61.
- Suggested remedy is to add new figure for dimming function as soon as some one knows what it does and the text is properly corrected.
- **Recommendation/Instruction to editor**
 - In our opinion, this comment is correct.
 - We will update the figure 61.
 - We'd like to recommend that we accept this comment in principle.
 - Accept in principle – the implementation of T-CID 632 will result in the modification of the problem; hence, closed

CID 631

CID	Name	Clause	Subclause	Page	Line	Type	Comment	SuggestedRemedy
631	Huan-Bang Li	7	1	129	24	T	the description in red color must be resolved.	

- This comment is related to figure 61.
- Comment means that the description in red color must be resolved.
- The description in red color is editor note.
- **Recommendation/Instruction to editor**
 - In our opinion, this comment is correct.
 - We will update the figure 61.
 - We'd like to recommend that we accept this comment in principle.
 - Accept in principle – the implementation of T-CID 632 will result in the modification of the problem; hence, closed

CID 632a

CID	Name	Clause	Subclause	Page	Line	Type	Comment	Suggested Remedy
632a	Kinney		Figure 61	129	24	E	Figure 61 hasn't been modified to DIMMER primitive as per text "Ed. Note: This figure needs to be modified for the DIMMER primitive"	modify Figure 61 to accommodate DIMMER primitive

- This comment is related to figure 61.
- Suggested remedy means that modify Figure 61 to accommodate DIMMER primitive.
- **Recommendation/Instruction to editor**
 - In our opinion, this comment is correct.
 - We will update the figure 61.
 - We'd like to recommend that we accept this comment.
 - Accept in principle – the implementation of T-CID 632 will result in the modification of the problem; hence, closed