

# MGA and Standards in One IEEE

*Antonio Luque, IEEE Vice President MGA*

*IEEE 802 Plenary Session, Madrid, Spain, 30 July 2025*



# Content

- ▶ Our mission
- ▶ Our members and our geographic activities
- ▶ MGA and Standards

# About me

## Professor of Electronics Engineering, University of Seville, Spain

- Founded in 1505. 65,000 students in total, 5,000 in engineering
- Honorary Professor, Obuda University, Hungary
- Visiting Professor, Harbin Institute of technology, China
- Invited teacher and researcher at Auburn University (AL, USA), Swiss Federal Institute of Technology Lausanne (Switzerland), TEC Monterrey (Mexico), Jade University (Germany), TU Delft (Netherlands).

## IEEE Vice President MGA, 2025

- Region 8 Director, 2021-2022
- IEEE Committees: Governance, Conferences, Audit, European Public Policy, Humanitarian Technologies Board
- MGA Committees: MRRC, MELCC, YP, ITCO, ARC, OMCC
- Vice President IEEE Industrial Electronics Society
- Conference General Chair, Transactions Editor, TAB/PSPB PSC, HKN



# Our mission

## At IEEE

We foster technological innovation and excellence for the benefit of humanity

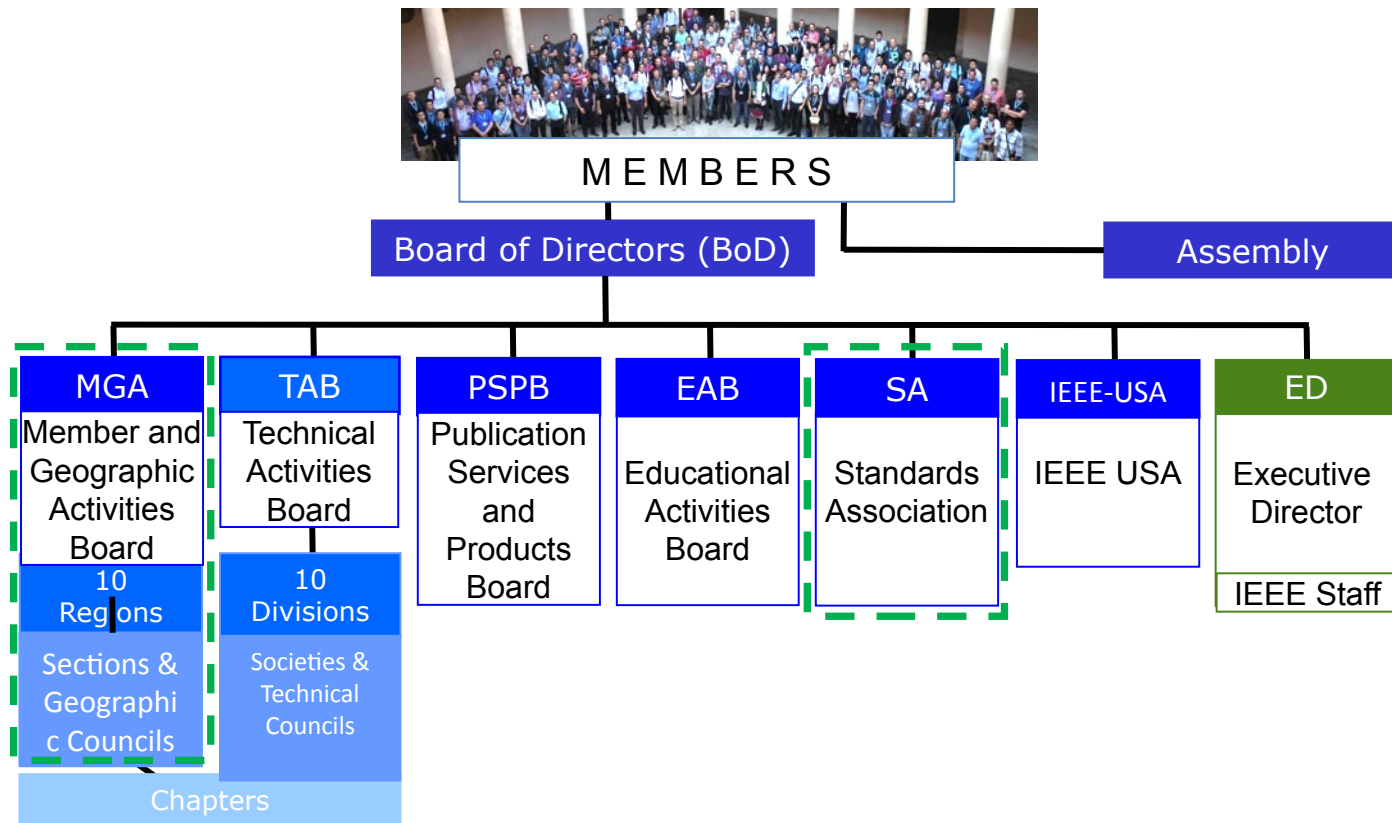
## At MGA

We Inspire, Enable, Empower, and Engage Members of IEEE

## Because (guiding principles)

- Membership is a core value of IEEE
- Members individually and collectively create IEEE's future
- IEEE enhances members' future
- Volunteer engagement is a key component of IEEE's success

# IEEE simplified structure



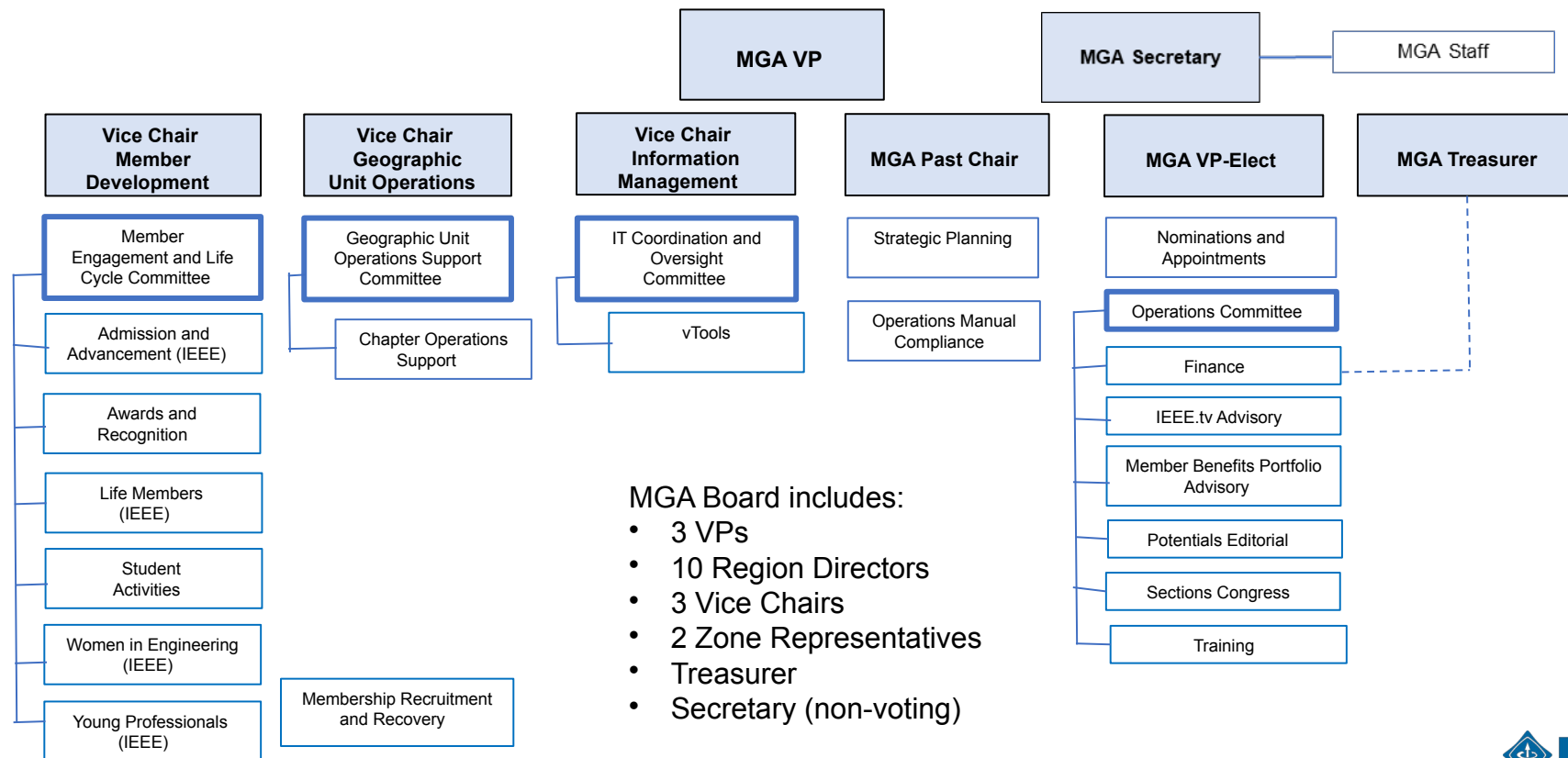
# Region realignment

## IEEE Regional World Map



**Regional map effective 1 January 2028**

# MGA structure and committees



# Activities in MGA and Regions

- Membership

- MELCC, A&A, ARC, Life Members, Students, WIE, YPs, Member Recruitment and Recovery

- Geographic Activities

- Geo Unit Operations, Chapter Operations, Sections Congress

- Information Management

- IT Coordination & Oversight, vTools

- Operations

- Training, N&A, Member Benefits, Finance

## A Year in MGA

- ▶ Many moving parts – ~500K members, 13K+ geounits, global reach, local touch drives the need for connections and communications
- ▶ IEEE scope and size drives the need for increased visibility into local operations – assets, compliance
- ▶ 2025-2030 IEEE strategy focused on One IEEE



# MGA and Standards

# MGA and SA in One IEEE

MGA and SA are already partnering in many major IEEE initiatives:

- **Technology for a Sustainable Climate MO (major OUs are MGA, TA, SA)**
- **Global Policy Caucus (MB appoint one member each, Regions 7, 8, 9, 10 appoint one member each)**
- **Cross-appointments between MGA Board and SA Board of Governors (informal)**
- **Future Directions Committee (MGA, SA appoint one member each)**
- **AgeTech initiative**
- **Humanitarian Technologies Board (MGA, SA appoint one member each)**

# MGA and SA in One IEEE

MGA can support Standard activities:

- **Vast network of volunteers on the ground in Sections, Chapters, Affinity Groups, Student Branches**
- **Local reach in Regions 7-10, where IEEE Standards are not always widely adopted**
- **Programs for engaging students that can be used to leverage knowledge on standards**
- **Local Groups as a flexible tool to support local activities all over IEEE**

# Local Groups

- A flexible and agile method to start, create, engage
  - Not a GeoUnit
- Only two (2) IEEE members needed to start it
- Technical and Non-technical interests
- **Non IEEE members can participate**
- Easy to discover, explore and track new trends
- Opens a new channel for engagement
- Strengthen and recognize industry/academic/government collaboration
- Focus on Local Interests but also connect with worldwide similar groups
- Ability to partner with local organizations
  - A new local interest
  - A company-industry group or campus
  - A local specialized need

As of June 2025:

**135 Local Groups approved, more in line**

- 57 Blockchain
- 9 Climate Change
- 3 Entrepreneurship
- 7 Quantum Computing
- 4 Cyber Security
- 3 Industry
- 3 AI

**Should we consider Local Groups on Standards? On IEEE 802?**

# CALL FOR 2026 Nominations

IEEE Member and Geographic Activities



**IEEE MGA Committee  
Member Positions**

Submit by 1 August 2025

**THANK  
YOU!**