

4-Mar-13

DRAFT - EC-V1

**IEEE 802 Meeting Specs - By Working Groups (subject to change)****Rooms available in ITU**

	Room name	Meeting/WG	Capacity	Configuration
1	A	OmniRAN	82	Classroom
2	Popov 1	802.1#1	142	Classroom
3	Popov 2	EC Plenaries + 802.3#3	142	Classroom
4	C1	802.3#4	108	Classroom
5	C2	802.3#5	108	Classroom
6	H1	802.3#6	50	Classroom
7	H2	TBA	50	Classroom
8	K1	802.1#2	50	Classroom
9	K2	TBA	50	Classroom
10	L1	802.1#3	30	Classroom
11	L2	TBA	30	Classroom
12	M1	802.16#1	30	Classroom
13	M2	802.16#2	30	Classroom
14	V49	802 EC Workroom #1	12	Boardroom

**Rooms available in CICG**

	Room name	Meeting/WG	Capacity	Configuration
1	1		784	Classroom
2	1 (in reduced config.)	802.11#1	372	Classroom
3	2	802.3#1	552	Classroom
4	3	802.3#2	128	Classroom
5	4	802.11#2	128	Classroom
6	5	802.11#3	60	Classroom
7	6	802.11#4	60	Classroom
8	7	Event Office	20	Boardroom
9	8	Network Office	20	Boardroom
10	12	802 EC Workroom #2	12	Boardroom
11	13	TBA	24	Boardroom
12	14	802.11 #6	24	Boardroom
13	15	802.0 EC Boardroom	32	Boardroom
14	16	802.19	24	Boardroom
15	17	802.22	24	Boardroom
16	18	802.11 #5	42	Boardroom
17	19	802.21	18	Boardroom
18	20	802.18	18	Boardroom
19	VIP Room	802.0 EC	0	Lounge

**Rooms available in CCV**

	Room name	Meeting/WG	Capacity (# seats)	Configuration
1	A	802.15#1	100	Boardroom
2	B	802.15#2	56	Boardroom
3	C	802.24	56	Boardroom
4	D	802.15#3	22	Boardroom
5	E	802.15#4	22	Boardroom

**ADDITIONAL NOTES:**

Session Date: Sunday \*All Meetings must be held in ITU.

802.11 CAC ITU - L1

802.15 AC ITU - L2

802 Rules ITU - L2

802 New Members ITU - L1

802W Leadership ITU - L1

Session Dates: Monday, Tuesday, Wednesday and Thursday \*All Evening Meetings (PM3) after 6pm must be held in ITU.

Session Date: Friday \*All Meetings must be held in ITU.

**MEETINGS TO BE CONSIDERED/CONFIRMED:**

1. Opening Plenary Meeting - Monday AM ?? -- Welcome to Geneva and give ITU chance to address Participants.
2. Tutorials - Monday -- IF ITU room is too small, consider having Tutorials early in the CICG and have other meetings later.



- Centre International de Conférence Genève (CICG)  
17 rue de Varembe  
CH 1211 Genève 20  
Tél. +41 (0)22 791 91 11  
Fax +41 (0)22 791 90 64
- Centre de Conférences de Varembe (CCV)  
9-11 rue de Varembe  
CH 1211 Genève 20  
Tél. +41 (0)22 791 91 11  
Fax +41 (0)22 791 90 64

# Les accès Access



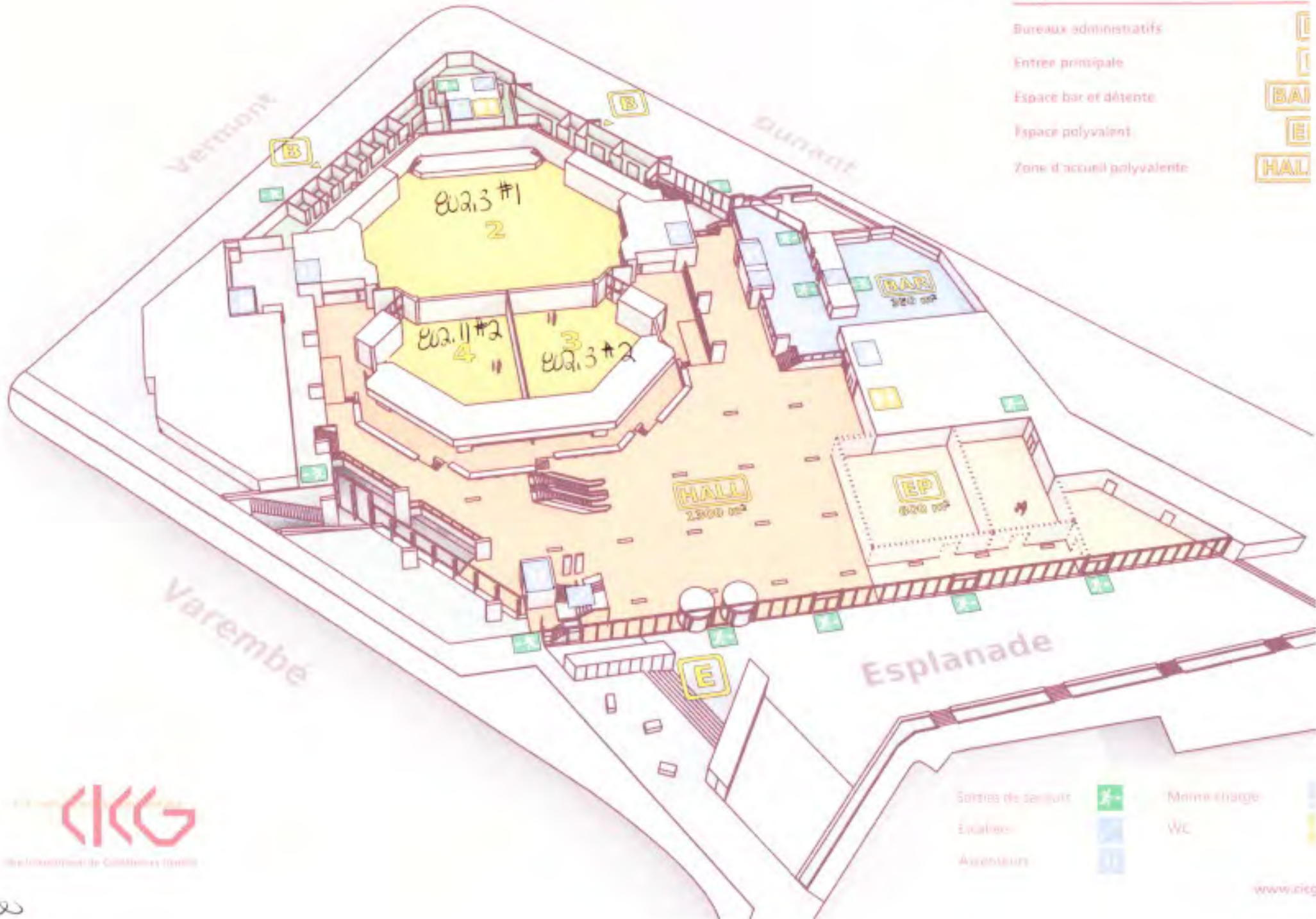
- Genève Tourisme  
18 rue du M-Stanis - CP 1602  
CH 1211 Genève 20  
Tél. +41 (0)22 909 70 00  
Fax +41 (0)22 909 70 01
- Aéroport International  
CP 100 - CH 1215 Genève 15  
Tél. +41 (0)22 717 71 11  
Fax +41 (0)22 798 43 77
- Gare de Cornavin  
CH 1200 Genève  
Tél. 0900 300 200



DRAFT ONLY (FTF)

Rez

- Bureaux administratifs
- Entree principale
- Espace bar et détente
- Espace polyvalent
- Zone d'accueil polyvalente



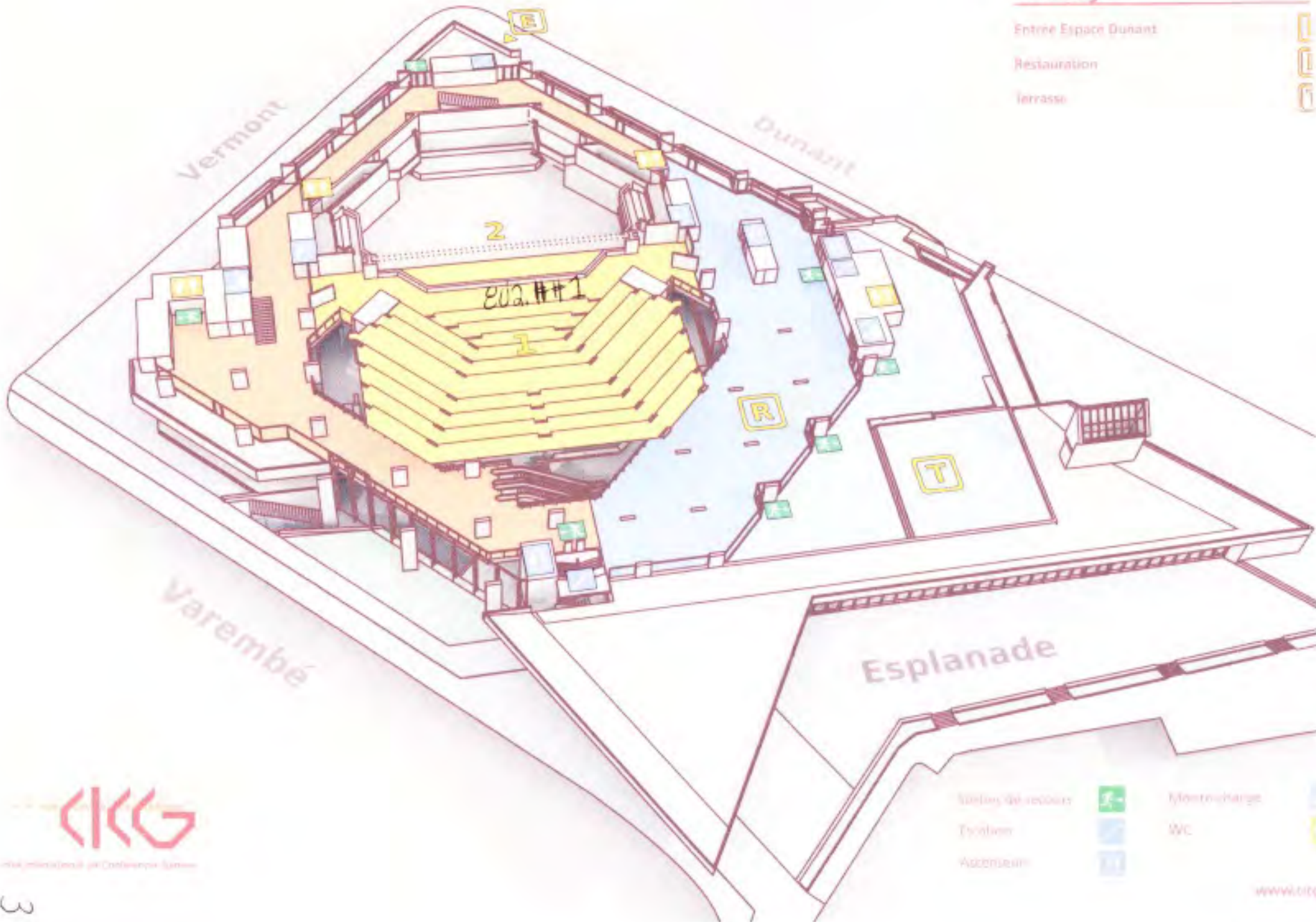
# DRAFT ONLY (FTF)

## 1er étage

Entrée Espace Dunant

Restauration

Terrasse



Centre International de Conférences Genève

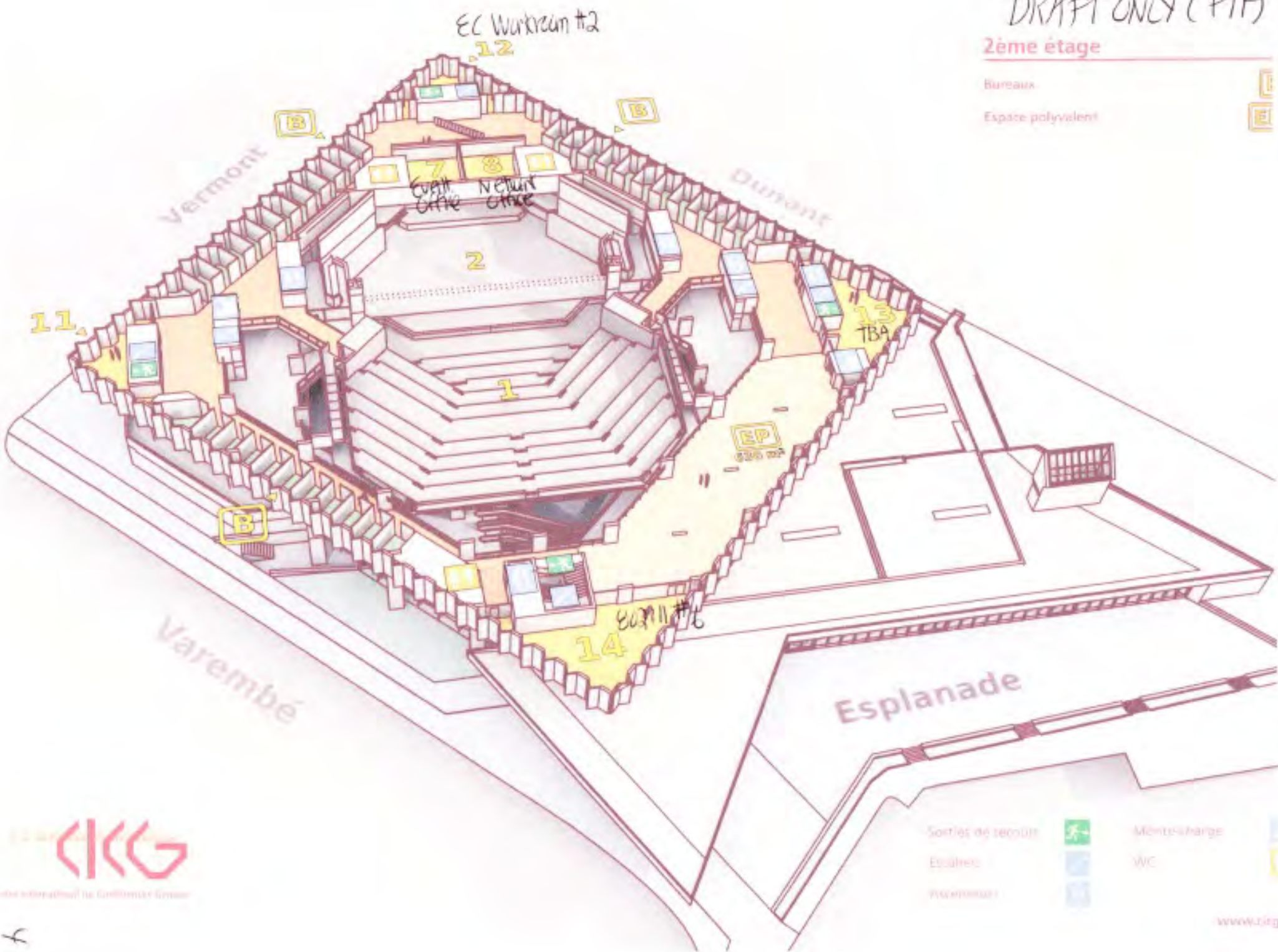


DRAFT ONLY (PTF)

### 2ème étage

Bureaux

Espace polyvalent



Centre de la culture / Le Centre de la culture

Sorties de secours



Monte-charge

Escaliers



WC

Ascenseurs



## Niveau -1

- Bureaux
- Centre de Gestion Sécurité
- Espaces polyvalents
- Cour TV

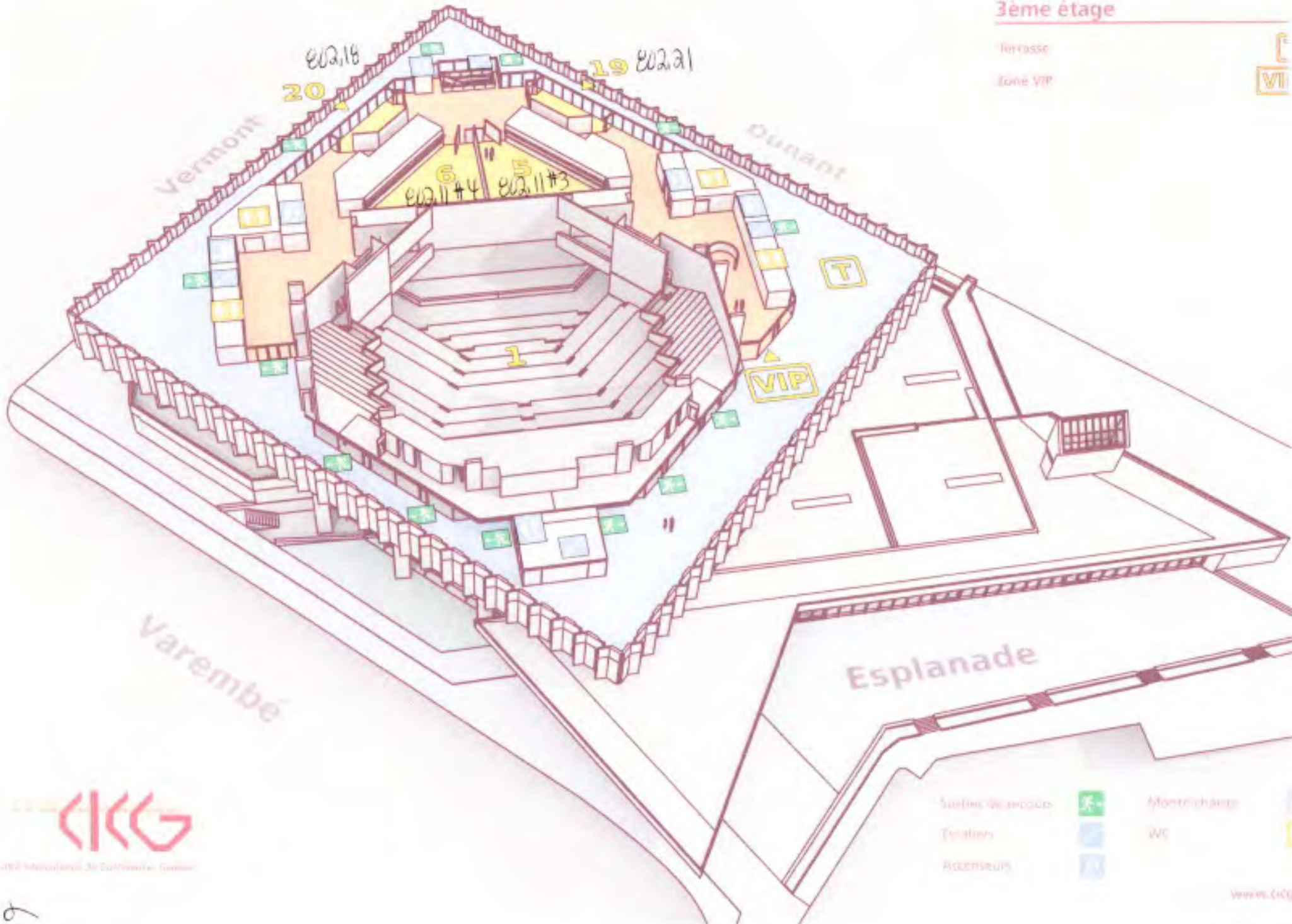




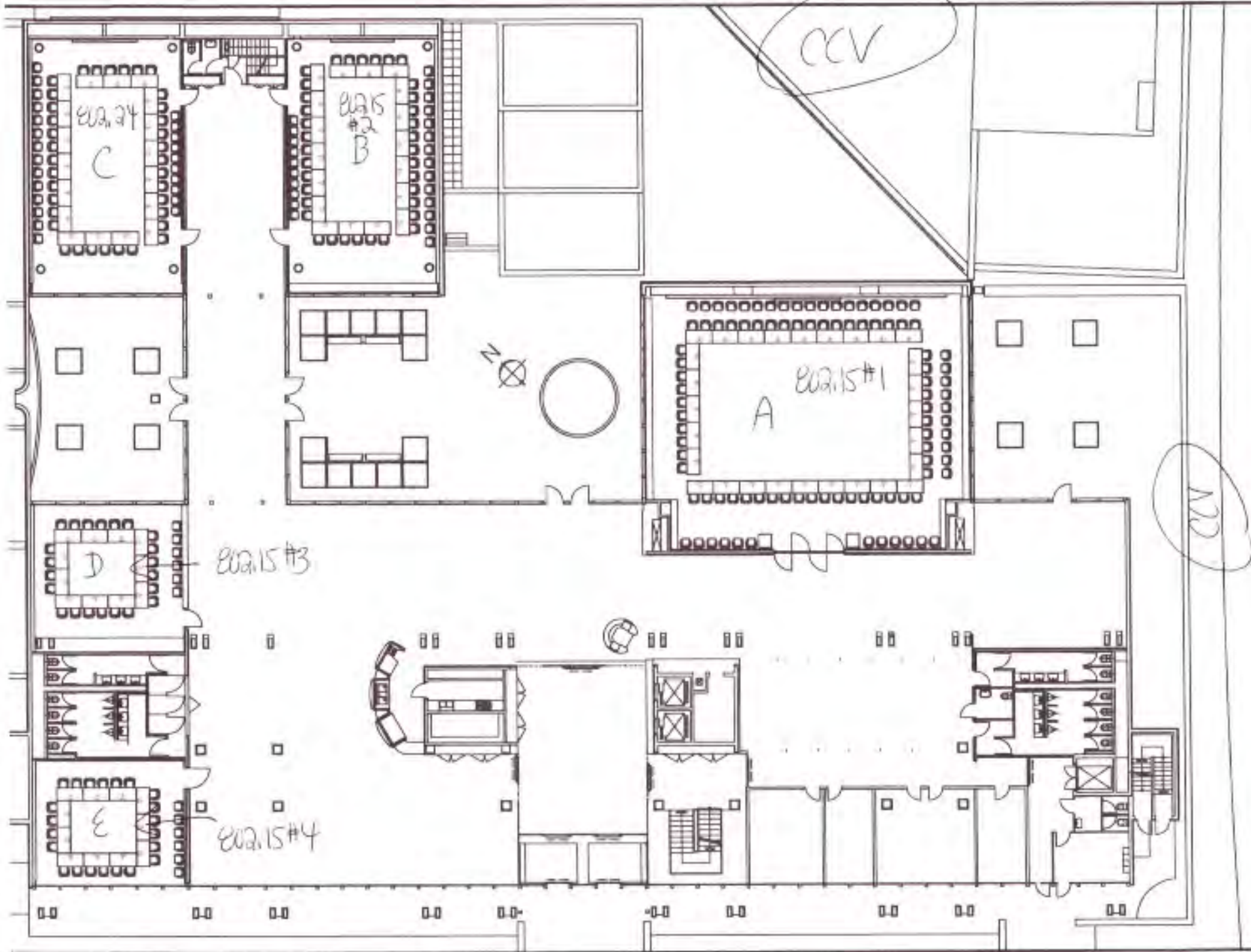
3ème étage

terrace

Zone VIP



DRAFT ONLY (FIT)



FONDATION DES IMMEUBLES POUR  
LES ORGANISATIONS INTERNATIONALES



CENTRE INTERNATIONAL DE  
CONFERENCES DE GENEVE

DATE: 00

ECHELLE: 1:11

DATE: 06.06.2007

Visa Sécurité

NOM CLIENT

DATE: 11.03.2006

PROJ: 2004.1000

7



# ITU Circulation Plan



DRAFT ONLY  
(PTF)

## Tower Building

## Varembé Building

## Montbrillant Building

